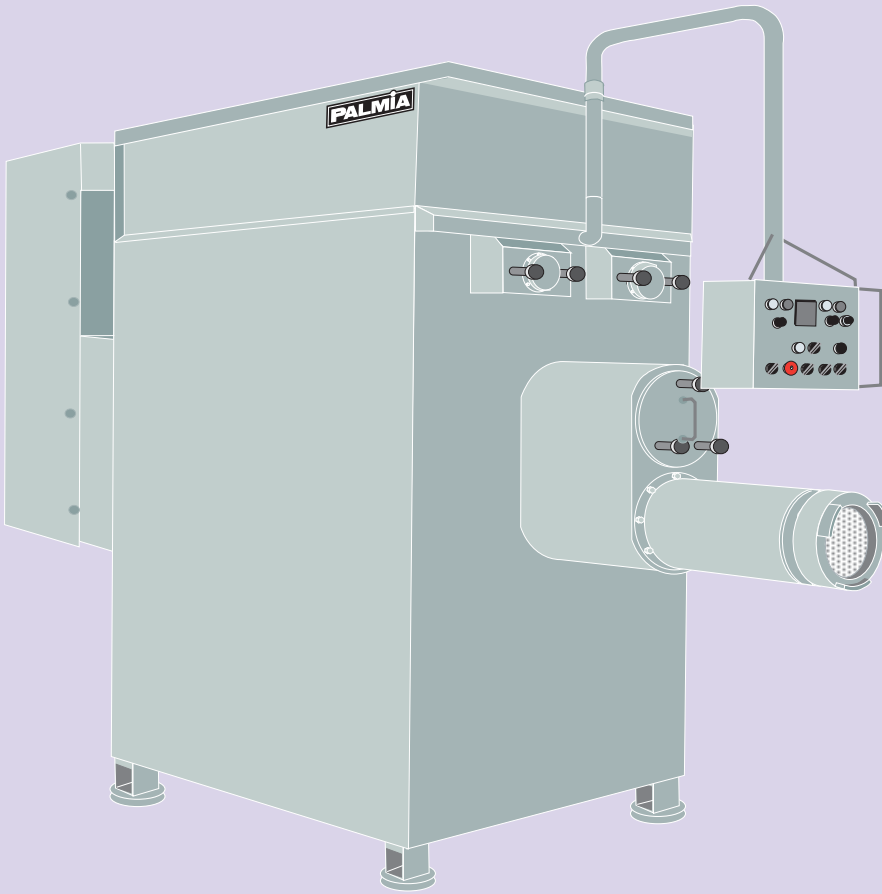


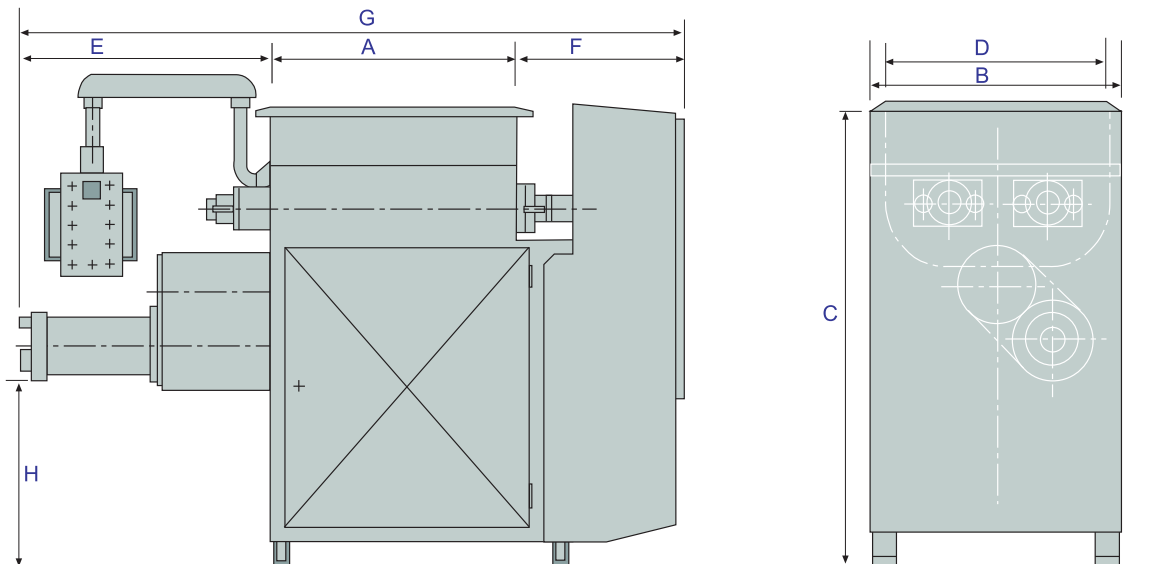
PALMIA MIXER-GRINDER

SERIES **DMM**



The DMM series of mixer/grinders are available in sizes from 500 to 3000 litres. The DMM series have a 200 mm grinder as standart.

Combining a mixer and grinder in the same machine makes the work much more effective, cuts down on spillage and takes up less space. The need for a conveyor tube between mixer and grinder is eliminated as is the storage of the mixed product.



TYPE	A	B	C	D	E	F	G	H
500	1000	875	1800	1000	1030	670	2700	720
1000	1250	1075	2000	1190	1030	750	3030	720
1350	1500	1075	2000	1190	1030	750	3280	720
2000	1500	1520	2165	1640	1030	900	3434	720
3000	2250	1520	2165	1640	1030	900	4180	720

PALMIA MIXER-GRINDER

SERIES

DMM

CONSTRUCTION

The standart mixer/grinder is made of stainless steel.

The gear motor and transmission are fully encased and thus protected from dirt and grime.

This simplifies cleaning of the mixer/grinder and minimizes the danger of accidents. Bearing mounts and end seals are specially designed to satisfy the highest demands on operational and functional safety.

The functions of the mixer/grinder are controlled from a centrally positioned control panel.

TECHNICAL DATA

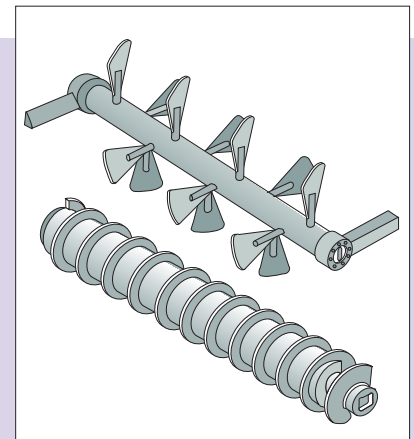
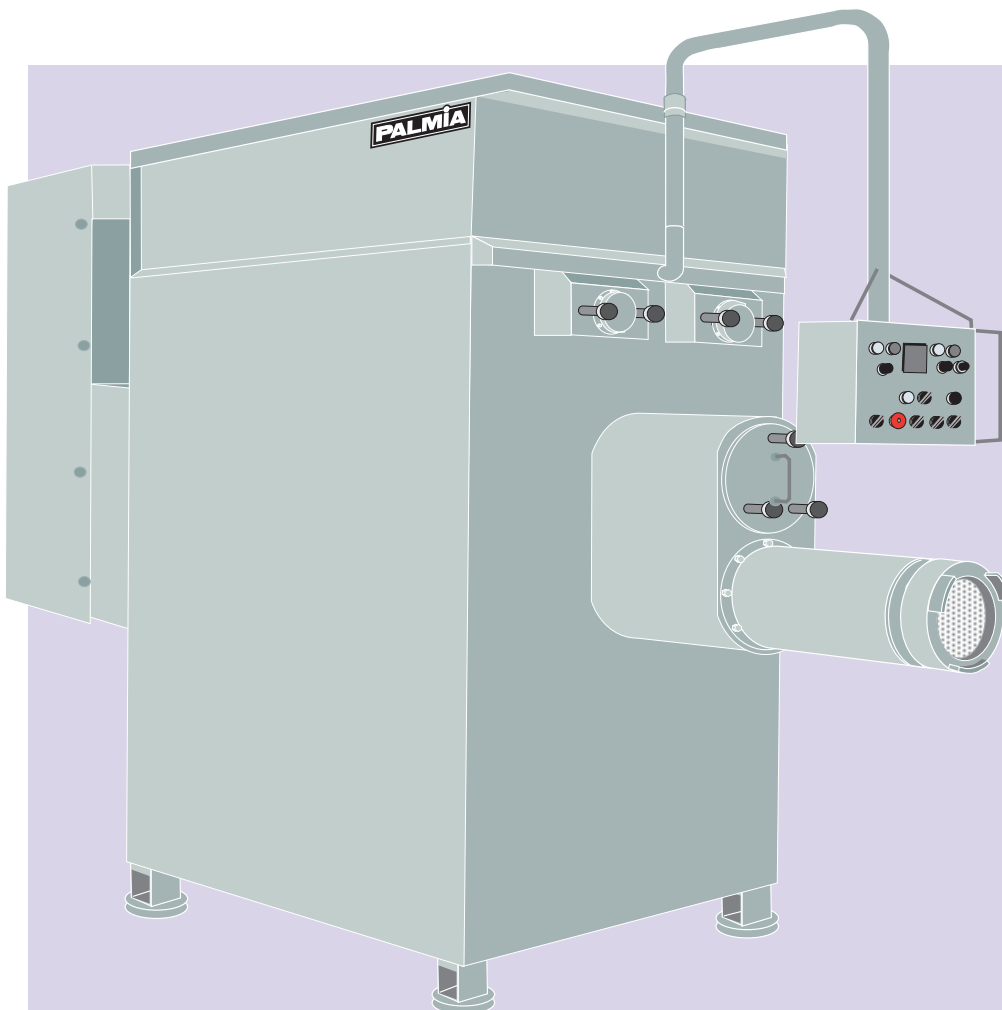
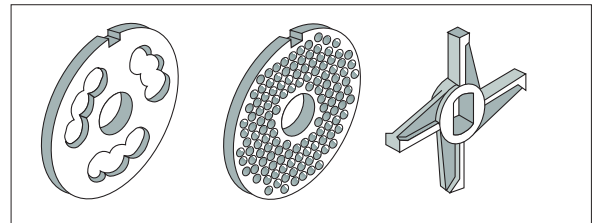
Motors: Three encased gear motors.
Transmission: Gear motor/belts.

KNIVES

The knife assembly can be of either one- or two-knife desing depending on the product to be ground and the desired fineness of the grind.

HOLE PLATES

Hole plates are available in the majority of existing hole sizes and designs.



Palmiatek Oy Ltd

Sepänpellontie 19
28430 PORI, FINLAND
Tel. +358 207 559 100
Fax. +358 2 550 7350
E-mail: palmia@palmiatek.fi